

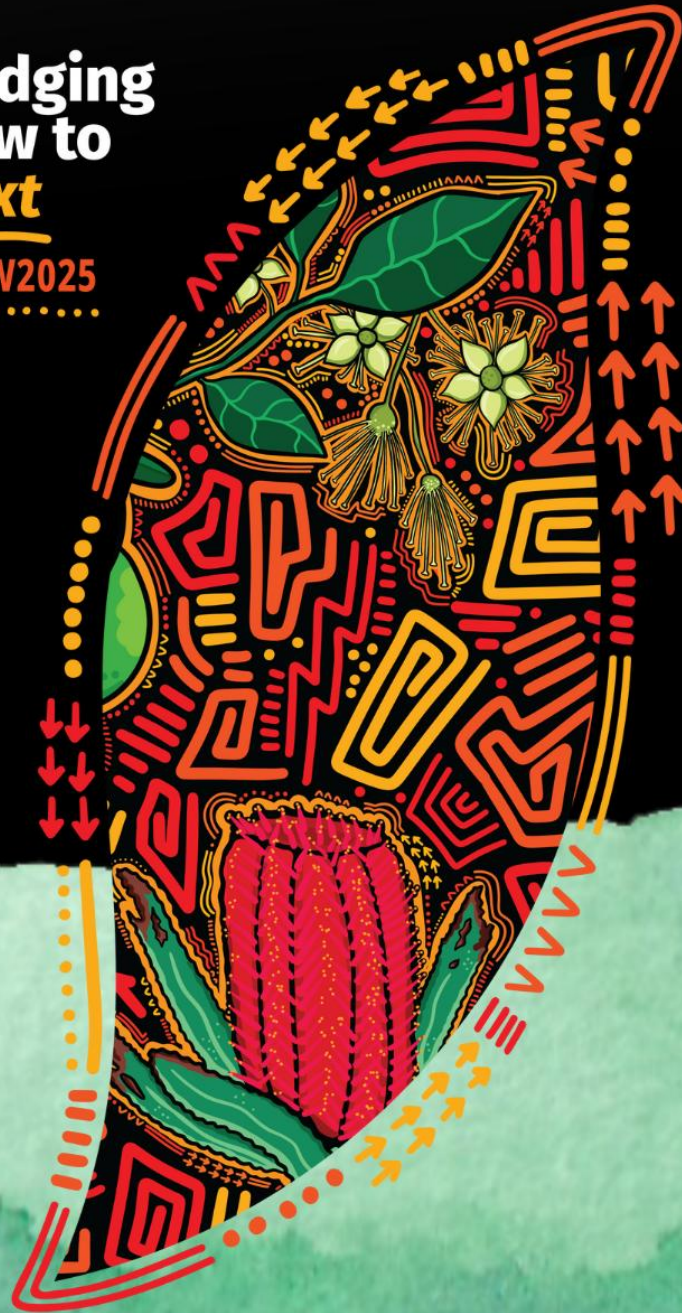
RECONCILIATION EXHIBITION

17.05.2025
14.06.2025



**Bridging
Now to
Next**

#NRW2025



INFORMATION BOOKLET

Bridging Now to Next Exhibition

The Shire of Carnarvon Library & Art Gallery and Community Art Hub invite you, the creative heart of Carnarvon, to participate in a vibrant and meaningful art exhibition celebrating National Reconciliation Week 2025 (NRW25).

Inspired by the NRW25 theme, "*Bridging Now to Next*," this exhibition seeks to explore the journey of reconciliation through the power of art. Rooted in the beautiful artwork of Kalkadoon woman Bree Buttenshaw, which captures the resilience and renewal symbolised by native plants – thriving after fire and adversity – we encourage artists to reflect on themes of past, present, and future, highlighting the crucial role art plays in connecting generations and fostering understanding.

What does reconciliation look like in our region, to you? This year, we particularly want to showcase the unique perspectives within our community and explore what practical steps we can take together, here in Carnarvon on our ongoing journey of reconciliation. We welcome and encourage your artwork to reflect on:

- The past and the journey to Reconciliation.
- The ongoing impact of issues locally.
- The future of Carnarvon

Key Dates and Deadlines

- **Info session Community Art Hub:** 2 April 2025
- **Register your participation:** 30 April 2025
- **Ready to hang session:** 1 May 2025
- **Artwork drop-off to Art Gallery:** 5-9 May 2025, 9.30 am – 5.00 pm
- **Opening night:** 16 May 2025
- **Exhibition dates:** 17 May – 14 June 2025
- **Artwork & sales pick-up period:** 16-20 June 2025

Registration

Register your participation and artwork details in person at the Community Art Hub, the Library & Art Gallery, Gwoonwardu Mia or online: <https://forms.office.com/r/iv5D9RGN9y>

Participation opportunities

This exhibition is open to absolutely everyone with a connection to Carnarvon. Reconciliation is everyone's business. As a community, we all live together and call this region our home, and we believe that everyone's voice and perspective are valuable to the conversation of reconciliation. Together, let's explore what reconciliation looks like in Carnarvon through the power of art.

We invite artists to participate in the exhibition in the following ways:

1. Enter your artwork in the exhibition

Submit your artwork for free:

- We welcome submissions of existing and new artwork that resonates with the theme of "Bridging Now to Next"
- Register your participation by 30 April 2025
- Deliver your artwork to the Art Gallery (18 Egan Street): 5 - 9 May 2025

2. Submit a quote to create a communal artwork

Co-create a communal piece with a workshop element

- Host a workshop at the Community Art Hub. Your workshop should respond to the brief and create part of a collaborative artwork for the NRW25 Exhibition.
- Submit your proposal and quote via email to: Lammens.s@carnarvon.wa.gov.au or in person at the Community Art Hub or Shire of Carnarvon Library & Art Gallery.
- Workshops can be hosted, promoted, and funded through the Shire of Carnarvon Library & Art Gallery and Community Art Hub.
- Ownership of these communal artworks will be negotiated with the artist by arrangement. Depending on the nature of these artworks, they can be considered for inclusion in the Shire and Community Art Collection, or considered for further display.
- For information about NRW25 workshops and events, please visit the Facebook pages of both the Community Art Hub and the Library & Art Gallery.

3. First Nations opportunity

Enter your artwork for Reconciliation Action Plan cover artwork

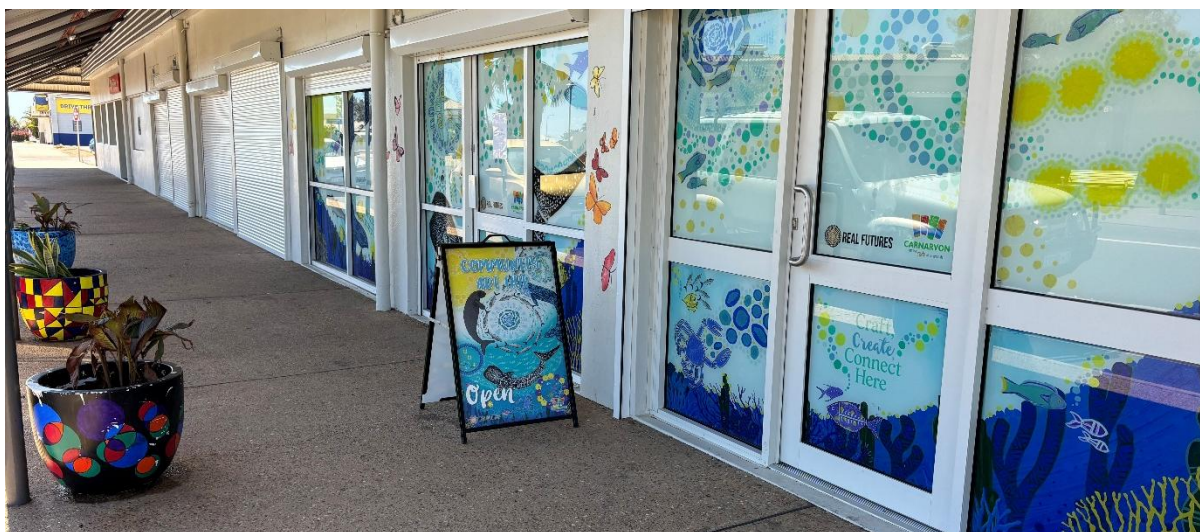
- First Nations artists can submit their artwork for consideration as the cover of the Shire of Carnarvon's Innovate Reconciliation Action Plan 2025-2027. The selected artwork will receive \$1,000 and be featured in the RAP and an exhibition.
- To apply, select: *Consider my artwork for the Shire of Carnarvon Innovate RAP 2025-2027* when registering.

Community Art Hub

The community Art Hub is the home of creations for the Reconciliation Exhibition. Drop into the Art Hub from Monday – Friday, 9am-3pm to get started on your artwork.

Create at the Community Art Hub (materials supplied!):

- All equipment and art materials required for your entry into the Reconciliation Exhibition can be supplied for free via the Community Art Hub for members.
- Membership is free. Speak to Art Hub staff about membership.



Type of artwork

All forms of artwork are welcome and celebrated, including but not limited to: painting, drawing, sculpture, photography, writing, textiles. Please speak to Art Gallery Officer to discuss your work, as we would like to accommodate alternative styles of work wherever possible.

What's in it for you?

- **Sell your art:** Opportunity to sell your artwork through the Art Gallery
- **Community showcase:** Have your artwork displayed in a professional exhibition, reaching a wide audience and sparking meaningful conversations.
- **Art supply sponsorship:** While there is no cash prize, we will offer sponsored art supplies to support your creative endeavours through the Community Art Hub; or artists can submit a quote for submission of communal pieces
- **Belonging:** Join a welcoming community that values and celebrates your artwork on Reconciliation Week.

Artwork Requirements

- Maximum size for all artworks to be hung: 1.5m x 1.5m in any direction, including the frame.
- Maximum weight for all artworks to be hung: 10kg.
- Sculptural/three-dimensional artworks should not exceed 12kg and 2 cubic meters. Works exceeding these limits require prior consultation and approval.
- All artworks must be presented to exhibition standards (finished, dry, and ready to hang with D-rings). If you need assistance, please work with the team at the Community Art Hub.
- All artworks must be clearly labelled on the back, including the artist's name, title, medium, dimensions, year, category, and price (as per details submitted on the entry form).
- All artwork submitted must be accompanied by a short story about the work.
- Entries that do not meet the required standards may not be accepted.

Fees & Payments

- **Entry fees:** There is no entry fee for participation in this exhibition.
- **Artwork sales:**
 - All entries are encouraged to be made available for sale.
 - Artists must clearly state their Goods and Services Tax (GST) registration status when entering.
 - The Shire of Carnarvon will manage all artwork sales Commission, at the rate listed in the current Fees and Charges Schedule, which is 20%, will be deducted, and the remainder paid to the artist at the close of the exhibition.
 - Entrants must provide their banking details on the entry form for proceeds of sales to be deposited via EFT.
- **Tax Requirements**
 - Artists who have an ABN and are registered for GST must include the GST amount in the total sale price. Artists who have an ABN and are not registered for GST must not include GST in the total sale price.
 - Artists without an ABN must provide a signed Statement by Supplier form, selecting the relevant section. Failure to do so will result in the Shire of Carnarvon withholding 48.5% of the retail price. This can be completed on entry or delivery of artwork.

Terms & Conditions of Entry

- Entrants must have a connection to Carnarvon and can be from anywhere in Australia.
- Entrants can submit a maximum of four (4) artworks.
- Artists are encouraged to enter online at www.carnarvon.wa.gov.au.
- Artists not entering online can submit their hard copy entry form to: Carnarvon Library & Art Gallery, 18 Egan Street, Carnarvon (Tuesday to Friday 9.30 am to 5.00 pm and Saturday 9.30 am to 12.00 pm).
- The Shire of Carnarvon, while taking good care of all entries, will not be responsible for any damage or loss of artwork. It is the responsibility of the artist to provide insurance for their work.
- Artists will be notified of their artwork sale at the end of the exhibition.
- The Shire of Carnarvon reserves the right to reproduce entries for publicity, catalogue, and future marketing and archival purposes.
- Entries deemed unsuitable by the curator and/or non-compliant with the conditions of entry will not be exhibited.
- Artists must package/wrap their artwork appropriately for delivery to and collection from the exhibition.
- Clearly labelled packaging may be stored at the gallery during the exhibition period.
- Entrants are responsible for all delivery costs. The Shire of Carnarvon will not cover freight or other delivery charges.
- Once an artwork is placed by the curator, it will remain in place for the duration of the exhibition and cannot be moved, withdrawn, or interfered with.
- Once on display, artwork cannot be modified in any way by artists or others.

Deadline

All entries must be delivered by 5pm on 9 May 2025 to be eligible. Late entries cannot be accepted.

The Shire of Carnarvon Library & Art Gallery and Community Art Hub look forward to hearing from you and seeing your artwork on display, sharing your message, and encouraging your contribution to Reconciliation in our community.

Contact

Sofie Lammens

Media & Arts Engagement Officer
lammens.s@carnarvon.wa.gov.au

